

The Role of the Disaster Relief Pharmacist



Eiko KOBAYASHI

Pharmacist M.S.

Pharmacy / International Medical Relief Department

Japanese Red Cross Medical Centre

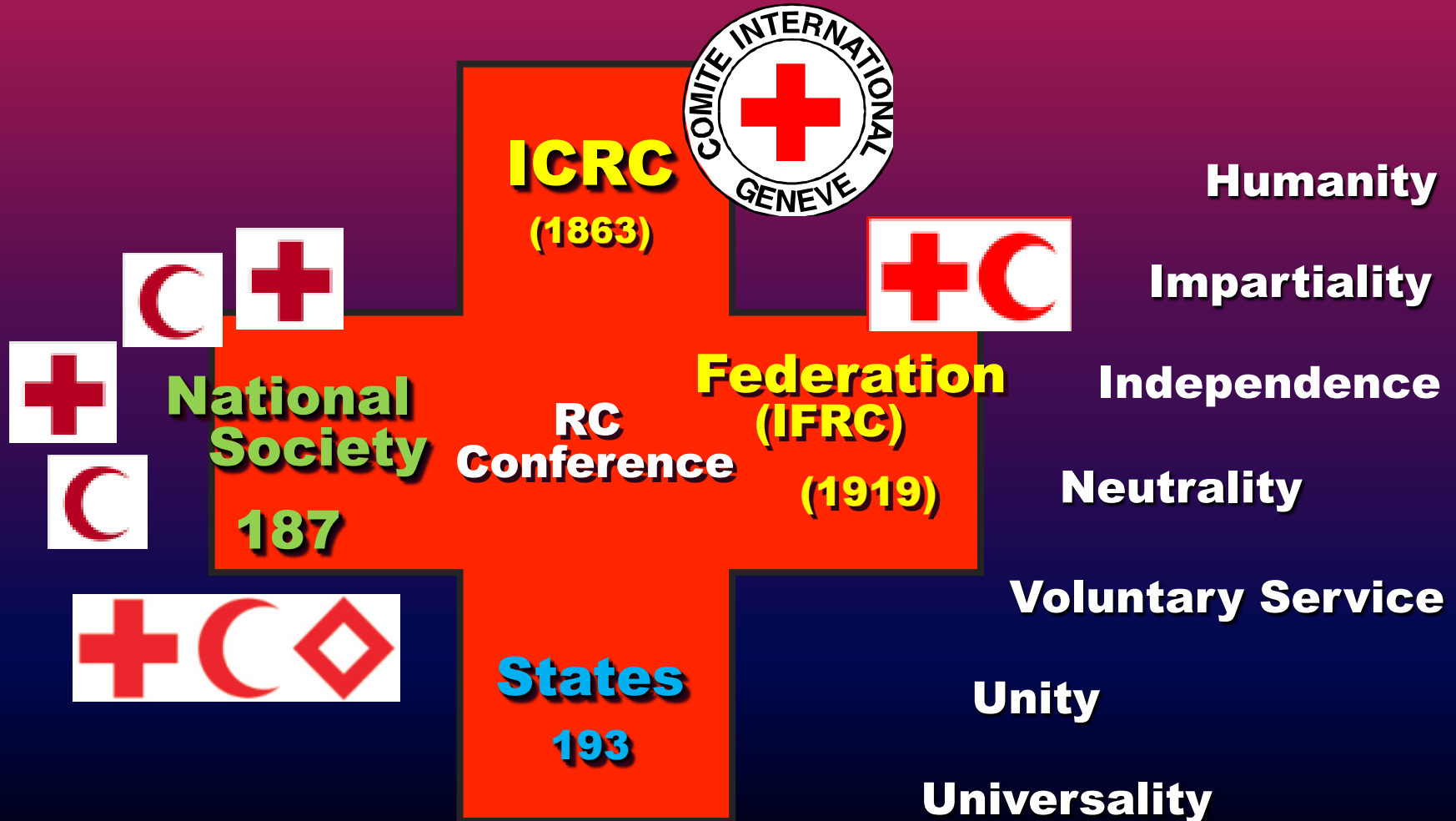
Overview

- **Red Cross and Red Crescent (RC/RC) Disaster Management**
- **Japanese RC Society (JRCS)**
- **Disaster response**
 - Domestic
 - International
- **Disaster Relief Pharmacist**



International Red Cross and Red Crescent Movements

Fundamental Principles



ERU: Emergency Response Unit

ERU

emergency
response
unit

- Trained technical specialists
- Uses pre-packed sets of standardized equipment.
- Designed to be self-sufficient for one month and can operate for up to four months

ERUs

- Logistics
- Relief
- IT & Telecommunication
- Water & Sanitation
- **Basic Health Care**
- **Referral Hospital (Field Hospital)**
- Base camp



Health Care ERUs in the Health System

The third level
hospital



District Hospital

Field Hospital ERU



Primary Health Care Center
Health Office

BHC-ERU 



Health Units

Volunteer

Family, individual

- **General Clinic**
(minor surgery, observation)
- **Mother and Child Health**
- **Vaccination**



Japanese Red Cross Society (JRCS)

International network

- One of 187 National Societies
- Community based activity

Domestic network

- Head Quarters
- 47 chapters
- 92 hospitals
- Designated Public Corporation under “the Disaster Countermeasures Basic Act”



JRCS Domestic Disaster Management

- Medical relief teams
 - Nationwide & locality based network
 - Standardized emergency medical kits in handy-carrying case (100patients for 2 days)
- dERU (domestic Emergency Response Unit)
 - Standardized equipment
 - Specialized medical relief team



JRCS International Medical Relief Response

- 5 core hospitals: International Medical Relief department
 - Specialized and trained personnel: **Pharmacist capacity**
 - Starter Medical kits: maintained by Pharmacist at the JRC medical center
 - Basic Health Care ERU Equipment and medicines
 - IEHK: Interagency emergency Health Kit

- **JRCS**
- BHC-ERU
- delegates training
- **Community-based Disaster Preparedness**

Emergency Readiness System

Emergency Relief

- **Emergency Appeal**
- ERU team
 - Delegates
 - Equipment



- Basic health Care support
- Community-based healthcare activity
- Psychological Support

Recovery Assistance

“Disaster Relief Pharmacist” in Disaster Cycle



Pharmaceutical support by Pharmacist in JRCS

JRCS Domestic Medical Relief

Standardized Medical Relief Team
domestic Emergency Response Unit



Tokyo Metropolitan
Disaster management

JRCS International Medical Relief

Starter medical kit
Emergency Response Unit



Disaster Relief
Pharmacist

EDUCATION

on Emergency Medicines
Individual Health Kit / ERU training



**Management of Emergency Medicine Kits
by running- stock system**

Support for individual delegates as JRCS Pharmacist

- Individual medical kit for International activities
 - Briefing and Debriefing with medicine information
 - Specific medicine information
 - ✓ Malaria
 - ✓ PEP (Post Exposure Prophylaxes)
 - STIs
 - HIV/AIDS



Interagency Emergency Health Kit (IEHK) 2006



United Nations Population Fund

ERU training2011_IEHK_Eiko



IEHK : Interagency Emergency Health Kit

**Malaria
Module**

Supplementary Unit

Basic Unit



JRCS BHC-ERU Emergency Medical Kit



+ JRCS BHC-ERU standardized Medical Kit and Trained Delegates



FIP2012-Amsterdam

dERU deployment for the Great East Japan Earthquake 2011



JRCS Pharmacists contribution on the Great East Japan Earthquake Response 2011

■ On disaster site

- Medical Team: 3-7 days rotations
 - ✓ dERU outpatient clinic ⇒ Mobile clinic ⇒ satellite pharmacy, etc.
- Support to local Pharmacists: 7days rotations
 - ✓ Pharmacy services support at emergency clinics and hospitals

■ Outreach support

- Delegates and on site Pharmacy operation
 - Local situation and needs changes/reporting
 - Consumption monitoring for replacement

■ Medicine supply and logistics Support

- To medical team for the stock replacement
- Challenge for centralized supply chain at local core pharmacy
- Coordination with logistics and the JRC HQs





Disaster Response

INTERNATIONAL

MEDICAL RELIEF



Logistics of Medical Supplies

-Pakistan Earthquake in 2005-

Local Hospital, Pakistan

• **Physiologist**

wheel chair, crutch

• **Psychologist**

Antidepressant

• **Nutritionist**

Nutrition, Vitamins

Surgical
Patients

**DMC : Disaster
Management Cell**

**Community
Pharmacy**



IFRC Field Hospital

**Medical
Logistician**

needs
supply



IFRC

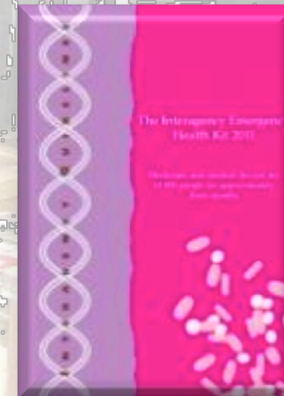
Medicine Supply

Medicine has culture...

- WHO Guidelines for Drug Donations
- WHO Model List of Essential Medicines
- Standardized List
 - JRCS BHC-ERU medical kit
 - Interagency Emergency Health Kit (IEHK)
 - Emergency Item Catalogue (ICRC/IFRC)
- Local procurement

NO Double Standard!!

Respect of National standard or Global standard !!



Medical Logistician in IFRC

(the International Federation of Red Cross and Red Crescent Societies)

Medical Logistician
Medical Logistics (Med Log)

Hospital ERUs
Med Log /
Pharmacist

Logistics
(Med Log)

Health

Water/
Sanitation

IFRC

Team leader

Head Nurse

2 physicians

2 Nurses/
midwives

Admin
Technician

Nurse/
Pharmacist

Logistician

Operational National Society
Local Ministry of Health
Other NGOs

JRCS

Basic Health Care-ERU Team

(Med Log)



Medical Logistician

- **Warehouse management : IFRC standard rule**

- Organizing, stock control, distribution, documentations

- **Procurement role**

- Quality issues

- avoid local procurement
- how to handle batch recall

- Local procurement procedure

- **Donations issue**

- **Import/Export issue**

- Controlled medicine; Ketamine, Diazepam, etc.
- RDT (Malaria check test) and Malaria medicines



Medical supplies for Medical Store in ERUs

■ Hospital ERU

Outpatient department (OPD) or only for inpatients

- ✓ Hospital kit + IEHK + additional
- ✓ Controlled medicines

■ Basic Health Care ERU (BHC-ERU)

- Clinics (outpatients with observation beds)
- Mobile outreach activities
- ✓ BHC medical modules + IEHK+ additional



Additionally...

- Cholera kit
- Infusions
- Vaccines / supplies for vaccination campaign



Medicines in Emergency

- Donated medicines from all over the world

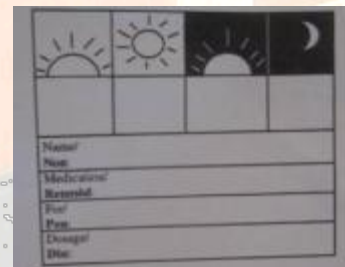
- Local medicines

- Global standard

- Essential medicines
- Interagency Emergency Health Kit (IEHK)
- Pictogram of medicine bag

- ✓ Respect local culture

- ✓ Try to find the local essential medicine list and/or guidelines



Handle with Donated Medical supplies



Challenges for Medicines Storage on-site

- **Tents:** 3x6, 6x6, 6x9(m)
- Shipping containers
 - Double roofing with ventilation
 - Only in areas with modest temperatures

↓ Temporarily set up then improve

- **Existing building**
 - Room with key lock



Examples of Medical Store in staff accommodation

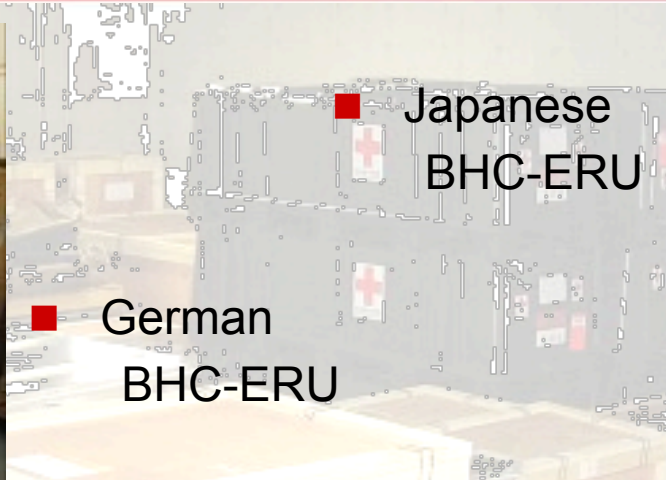
- Security guards
 - during day and night
- Outreach activities
 - for cholera operation



Initial set-up and locally built shelving



Arrangements of ERU boxes



Stock Management of ERU

- Set-up centrally managed storage system by supporting nurses



Clinic Management of ERU with Local Staff



Pharmacy Management

- Working with Local pharmacist/ Technician/ Pharmacy assistant



- Respect Local Standards
- Provide medicine information to local staff



Name/			
Name/			
Medication/			
Reason/			
For/			
Pres/			
Disease/			
Date/			

Flexible stances in the field

- Cooperation with local facilities
- Management of supplies and local staff
- Challenge for the community health



Challenges for Community Health



■ Anthelmintic Treatment Program

- Planning
- Distribution and records
- Information to medical staff and patients
- Side Effects Monitoring

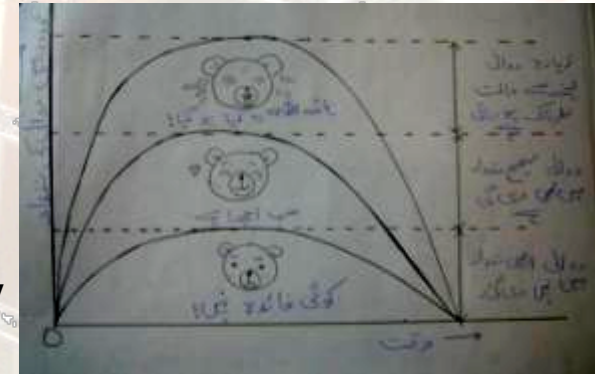


■ Educating Children on Proper Medicine Use

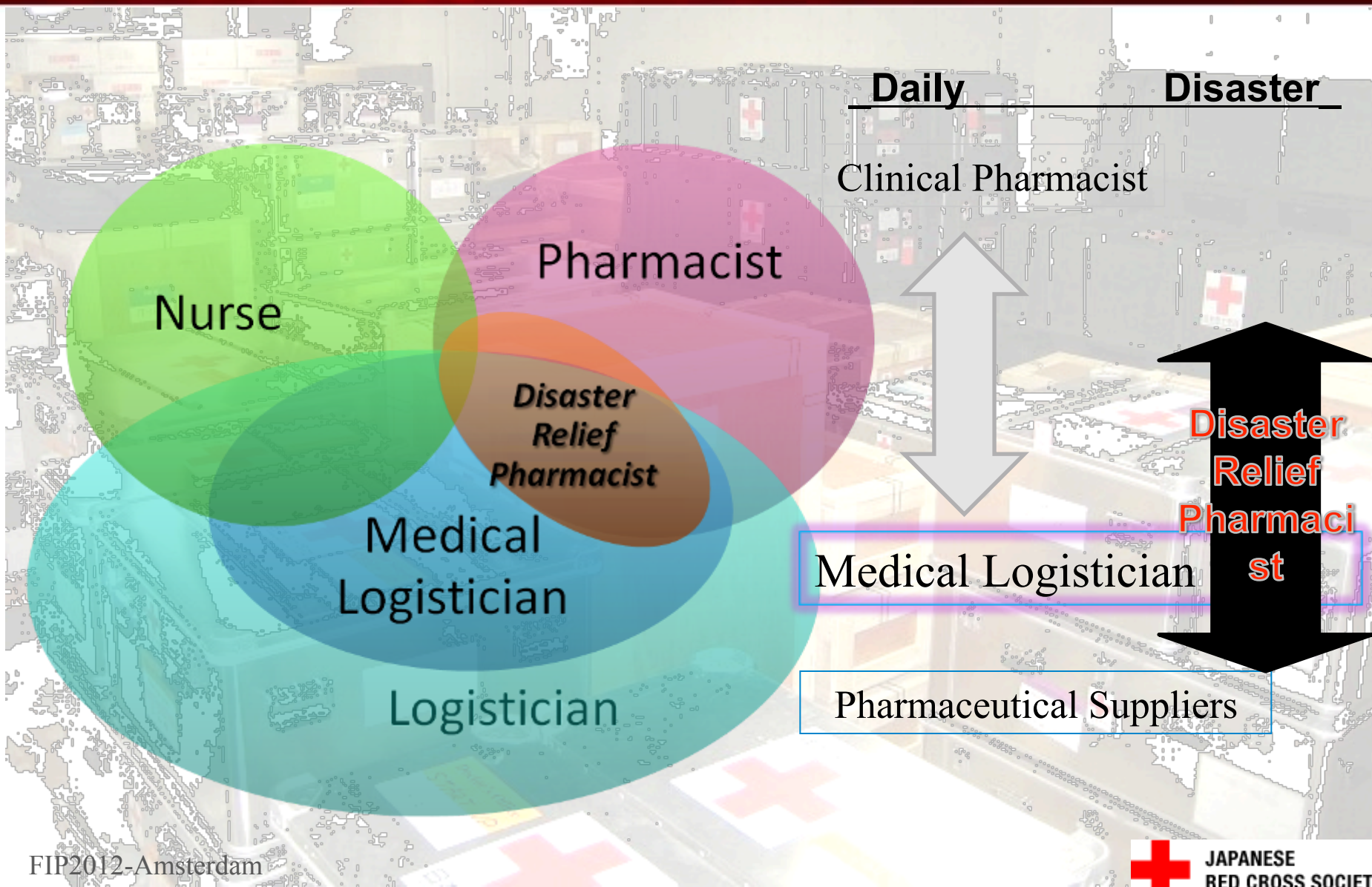
- lecture and brochure in local languages



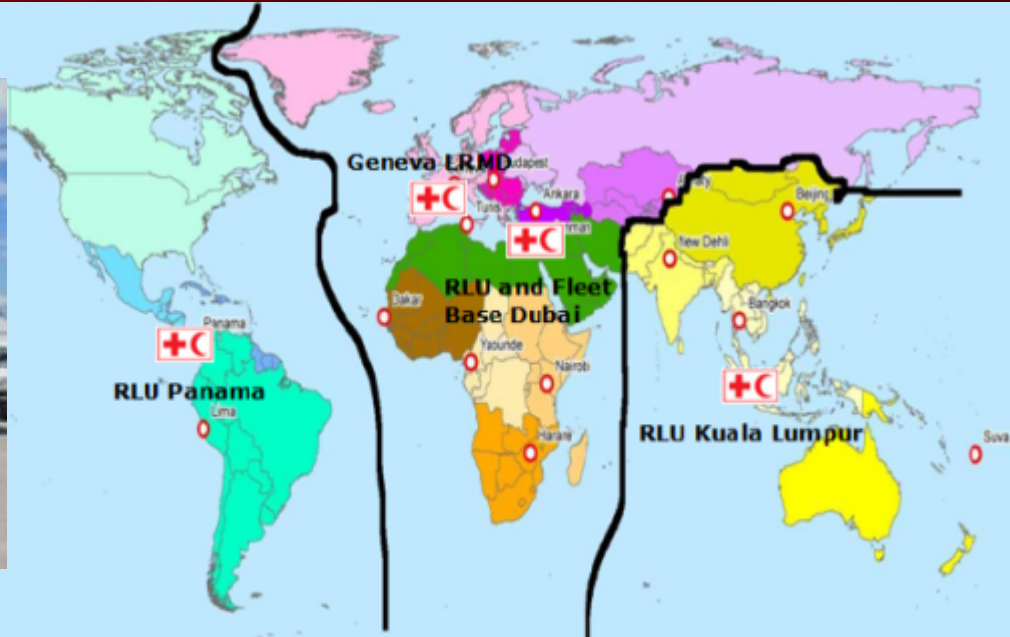
1. Medicine and snack
2. Medicine form
3. Dosage by ages
4. Blood concentrations and efficacy
5. How it works in your body
6. Schedule and cautions



Disaster Relief Pharmacist- Medical Logistician



IFRC Global Logistics Set-up



Global Logistics Set-up

Geneva Logistics

Strategy / Planning
 Coordination
 Funding
 HR/Training/ERU
 Information systems
 HPC
 Frame Agreements
 Reporting & analysis
 Medicine procurement

Regional Logistics

Mobilisation
 Procurement
 Coordination
 Fleet services
 Field logistics set-up
 Training
 Logistics network
 Reporting & analysis

Country Logistics

Warehousing
 Local procurement
 (except for medicines)
 Transport
 Fleet
 Reporting

Medical supplies flow-chart



IFRC CENTRAL MEDICAL STORE
IFRC Medical Warehouse

Waybill
 Packing list

REQUISITION
 Medical stock inventory control and order form

ERU - Medical Store

STOCK CARDS

Medical stock inventory control and order form

Pharmacy

Consumption Report
 Request book

Dressing room

Order Form

Injection room

Order Form


Minor surgery theater

Order Form

- Warehouse management
- Inventory
BIN / STOCK CARD / PC
- Stock estimation
- Medicine stock management



Disaster Management Information System -DMIS : Example on Logistics!

 International Federation
of Red Cross and Red Crescent Societies



DMIS
Disaster Management
Information System

Home

Preparedness

Disaster tracking

Response

Toolbox

About
DMIS

Celine PIGNY | My profile

 Logout

Overview

Assessment

DREF

RDRT

FACT

ERU

Logistics

IT/Telecom

Health

WatSan

Relief

Shelter

Logistics



Logistics is a key professional element in successful disaster management. It is a support service to both disaster relief operations and ongoing programmes

The basic task of the logistics function is to deliver the appropriate supplies and services, in good condition, in the quantities required and at the places and time they are needed.

Mobilisation table for current operations

The Mobilisation table is a tool which allows Federation logistics to monitor the response to an appeal and to see in one look what are the outstanding needs.

What is logistics ?

Humanitarian logistics refers to the management of emergency relief supplies from source to the beneficiaries, both efficiently and effectively. The importance of coordinated supply chain management for an efficient response, as well as the optimized use of scarce resources acquires a crucial significance in a humanitarian context: it means saving lives and diminishing the impact of communicable diseases due to inhuman living



The role of Medical Logistics



Experiences

Work in close cooperation with Health and Logistics teams

- Global standard
- Local standards
- WHO strategies
- Disaster Medicine
- Culture of Medicines
- Language

• Medical Logistics

Information

Logistics

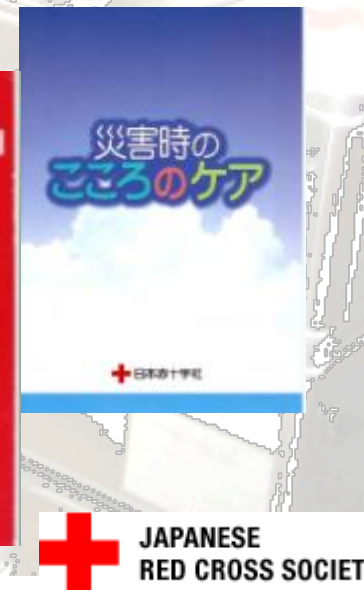
- Right quality
- Right quantity
- Right cost
- Right time
- Right place

Need to be involved from the beginning

- ❑ Liaise with Logistics
- ❑ Ensure the warehouse, medical pharmacy is set up and managed
- ❑ Organize distribution of supplies
- ❑ Monitor consumption and estimate replenishment
- ❑ Train and supervise local staff on management of medical supplies
- ❑ Ensure correct disposal of expire/ unusable medical supplies according to local legislation and/or WHO guidelines
- ❑ Disseminate the importance of Quality assurance and issues related to risks in local purchase

The Role of Disaster Relief Pharmacist in Disaster Preparedness

- **Revise the medicine list**
 - Convenient, less side effects and update
- **Radical improvement of the stock**
 - Running-stock system
 - PC data base, format of pharmaceutical inventory
- **Capacity buildings by communications**
 - Aware specificity of Disaster Medicine
 - Developing disaster operation plans
 - Share expertise in preparing
 - Management skills
 - Counseling skill



3 Competencies of Disaster Relief Pharmacist

□ Universal

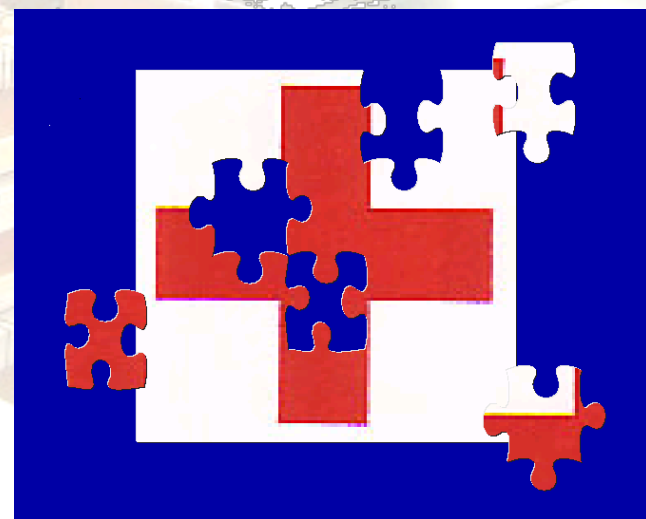
- International Standard
- WHO donation guideline
- Essential Medicines
- Disaster medicine

□ Professional

- Expertise of pharmaceuticals
- Capacity building

□ Interactive & Proactive

- Communication
- Flexible stances
- Medical logistician
- Range of activities for disaster operation



Japanese Red Cross Medical Logistics the 1st WORKSHOP in Tokyo

- ✓ Date: May 11-13, 2012 (3 days)
- ✓ Facilitator: Ms. Selma BERNARDI, IFRC MedLog
- ✓ Organizer: Ms. Eiko KOBAYASHI, JRCS Pharmacist
- ✓ Participant: 6 Pharmacists in JRCS hospitals
+ 2 pharmacists observer

AIM:

- Enhance Pharmacists' knowledge of Federation logistics procedures
- Increase JRCS pool of Pharmacists with knowledge in Medical Logistics
- Introduction to medical logistics procedures for future deployment both with JRCS ERU and Federation



Thank you !!

