

# Types of integration and their applicability to the integration of Community Pharmacy and Primary Health Care

A. Urionagüena, C. Piquer-Martinez, S. I. Benrimoj, F. Martinez-Martinez, V. Garcia-Cardenas, F. Fernandez-Llimos, M. A. Gastelurrutia, B. Calvo

*Pharmacy Practice Research Group, Faculty of Pharmacy*

University of the Basque Country, UPV/EHU, Vitoria-Gasteiz, Spain

[amaia.urionaguena@ehu.eus](mailto:amaia.urionaguena@ehu.eus)



Universidad del País Vasco Euskal Herriko Unibertsitatea



# Background:

- Pharmacists have not been perceived as providers of health services.
- **This vision is changing** ———> Community Pharmacy Network (CPN) is being recognised as a valuable resource for the health system.



- The term and concept of “integration” has many description and definitions in the literature providing policy options on the method of integration for CP and Primary Health Care (PHC)



# Objective:

- To Identify and analyse the different types of integration used in health to assess their applicability to the integration of CPN and PHC.

# Method:

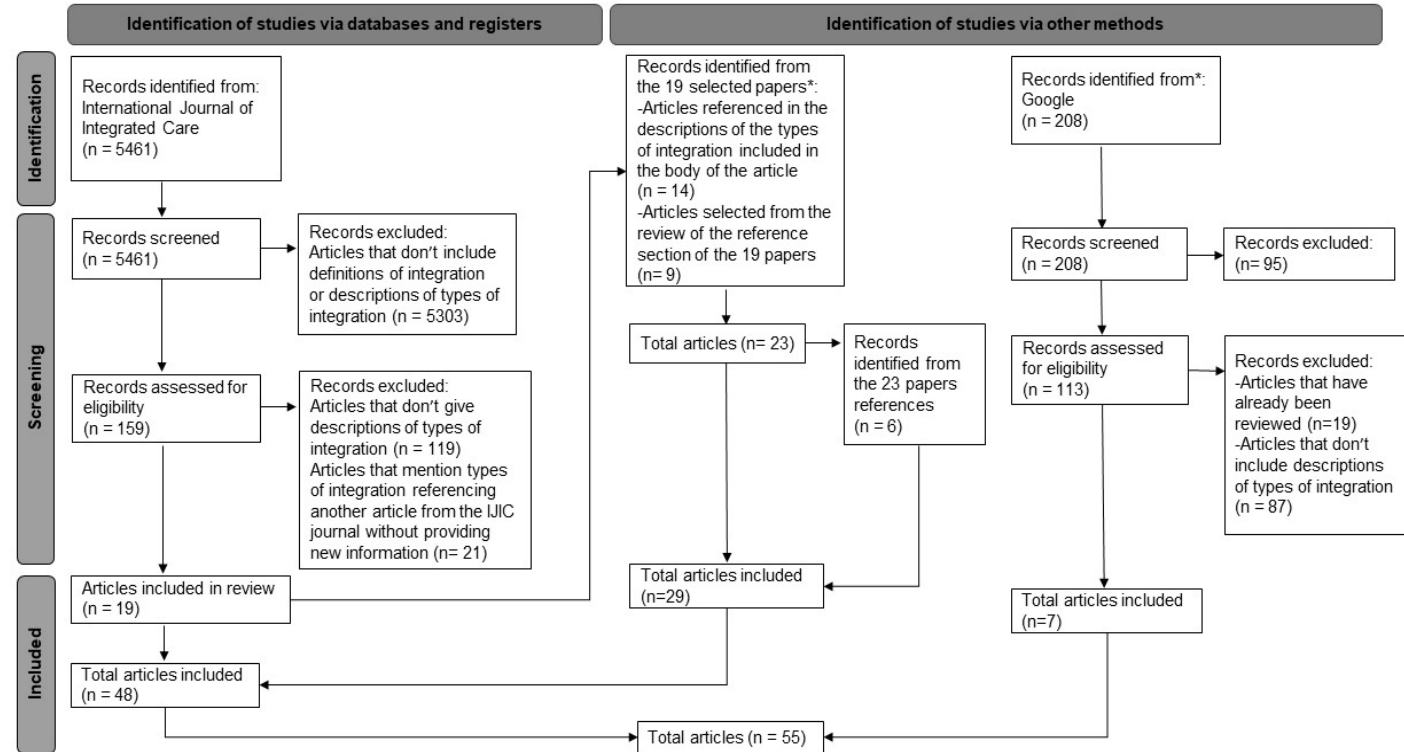
## Narrative review:

- Nov 2000 - Jan 2022.



- Google search:

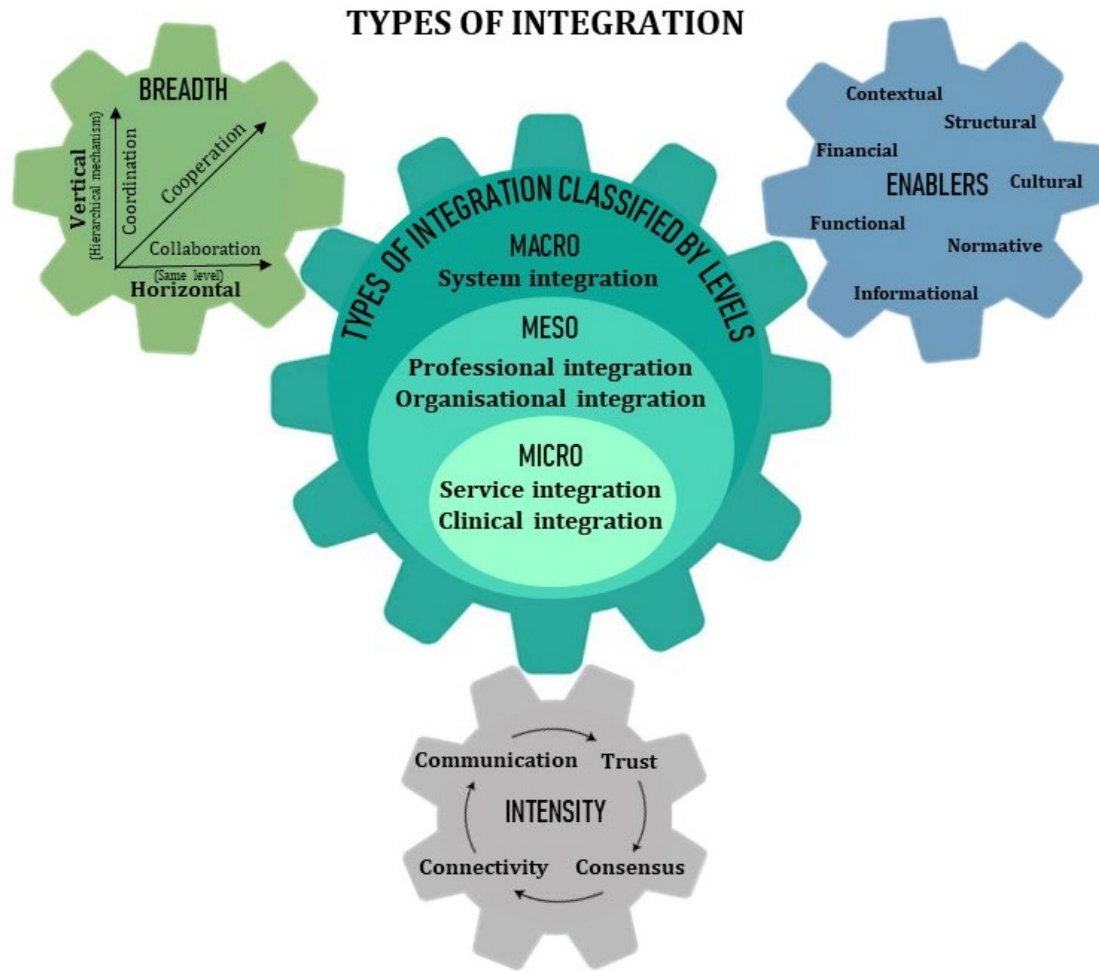
➤ Query: integration health types OR processes OR dimensions file type: pdf



\*The 19 articles are the same selected in the review of International Journal of Integrated Care.



# Results and Conclusions:



- **Community Pharmacy integration:**

- CPs and PHC providers are at the same hierarchical level
- Potential to reach higher intensities at the micro level (clinical and service integration).
- Working on four constructs and facilitating integration enablers would help achieve higher intensities.
- Policy and operational support from the meso and macro levels of the health system appears to be crucial.



# Thank you!

[amaia.urionaguena@ehu.eus](mailto:amaia.urionaguena@ehu.eus)



eman ta zabal zazu  
Universidad del País Vasco Euskal Herriko Unibertsitatea

